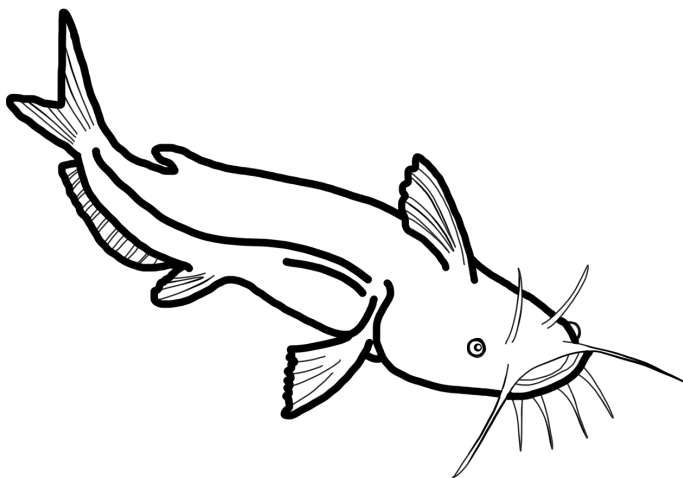


Journey Through the James River Watershed



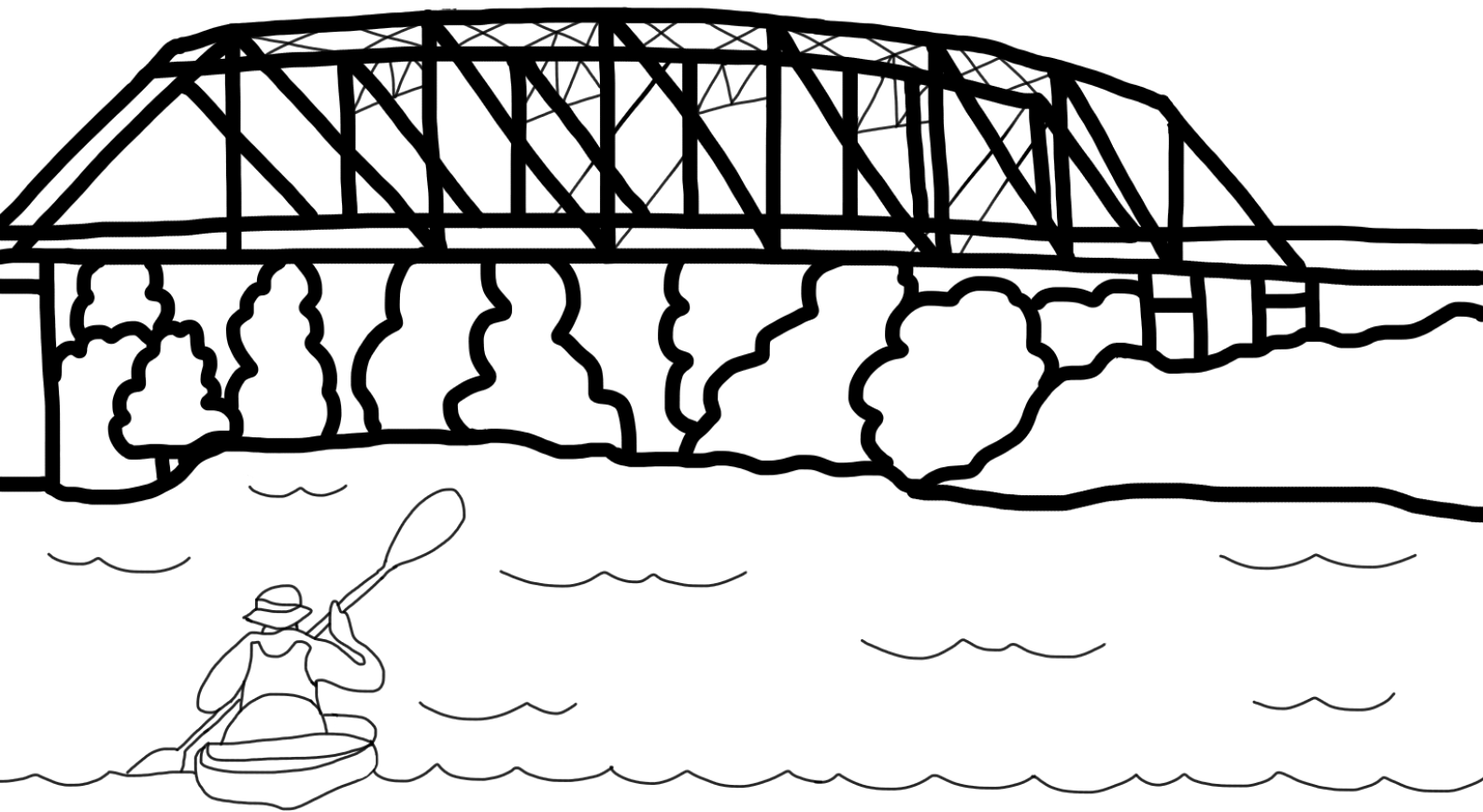
Coloring Book

What is a Watershed?

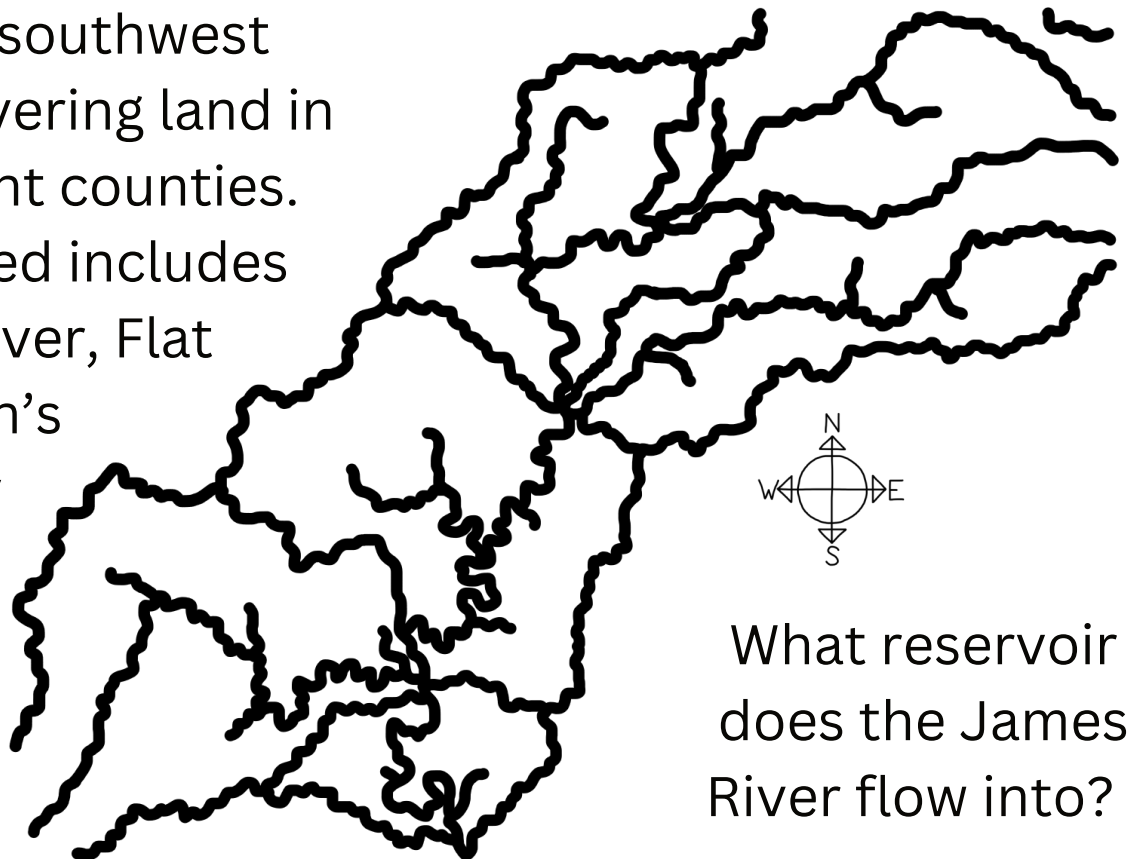
A watershed is an area of land where all the water drains to the same location, such as a river or a lake.



JAMES RIVER WATERSHED



The James River watershed is located in southwest Missouri, covering land in eight different counties. The watershed includes the James River, Flat Creek, Wilson's Creek, Finely River, and Crane Creek.



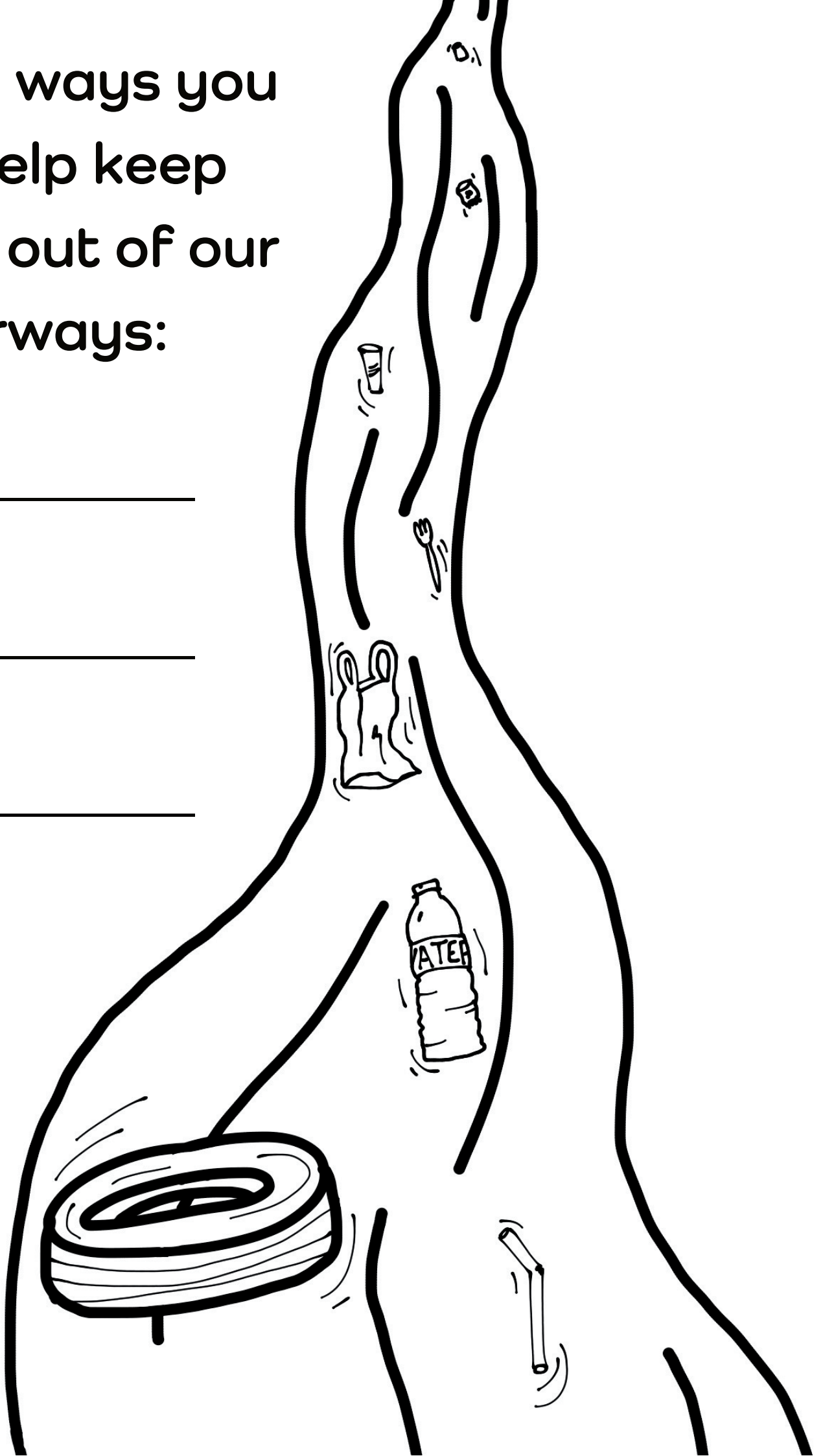
What reservoir does the James River flow into?

List 3 ways you
can help keep
trash out of our
waterways:

1. _____

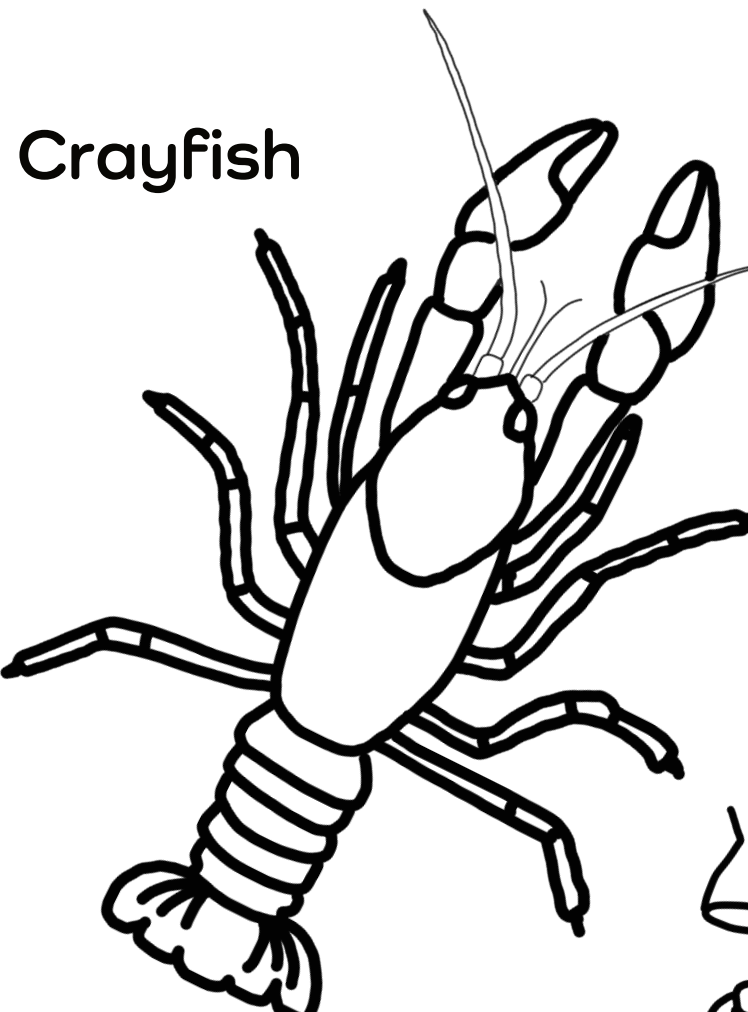
2. _____

3. _____

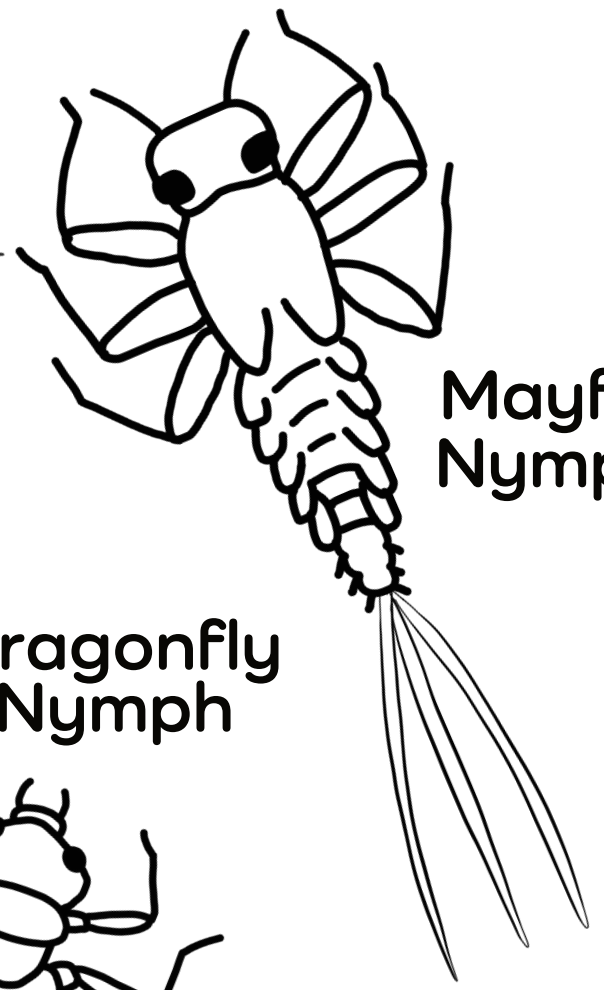


MACROINVERTEBRATES

Crayfish



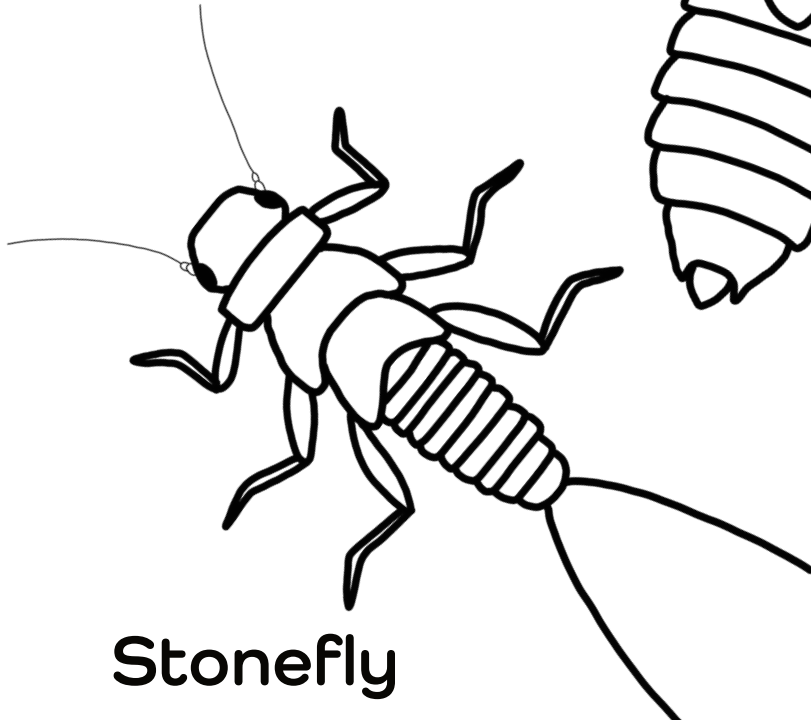
Mayfly Nymph



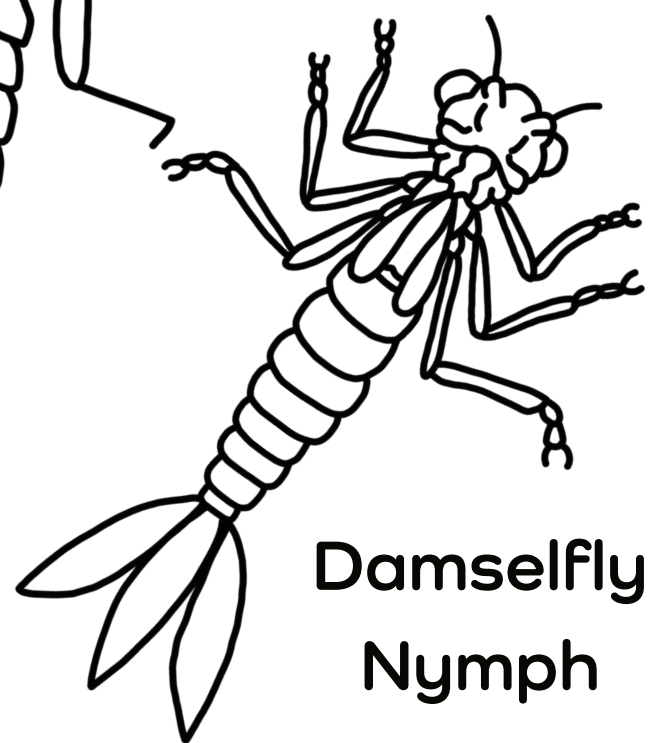
Dragonfly Nymph



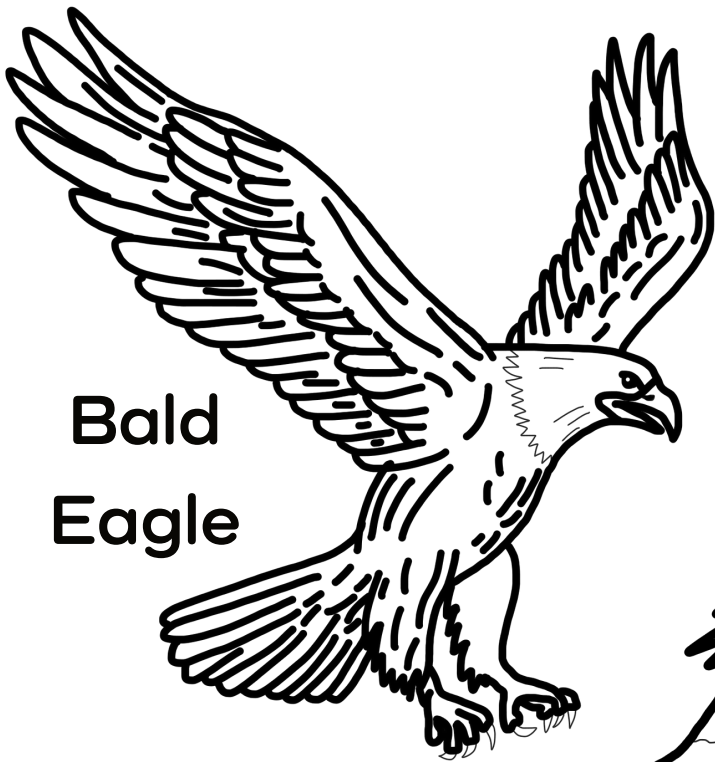
Stonefly Nymph



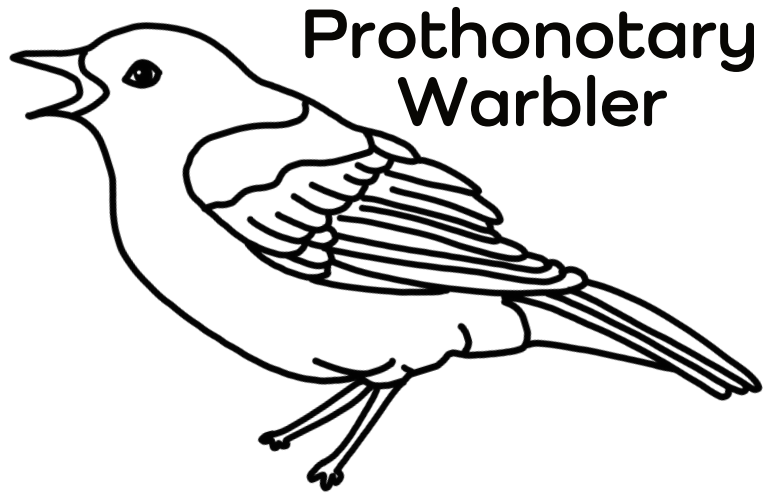
Damselfly Nymph



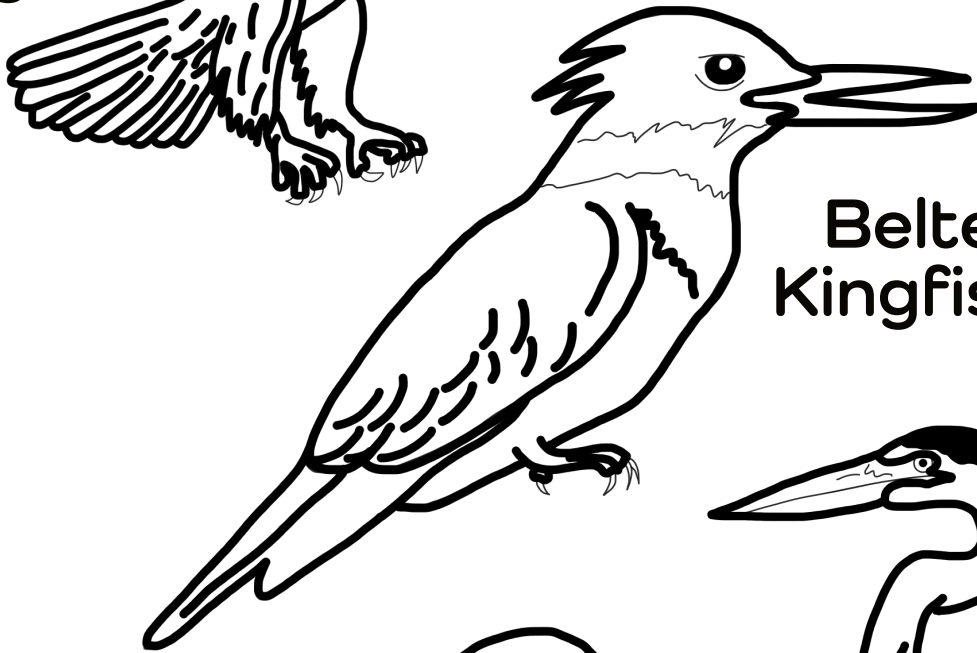
BIRDS OF THE JAMES RIVER WATERSHED



Bald
Eagle



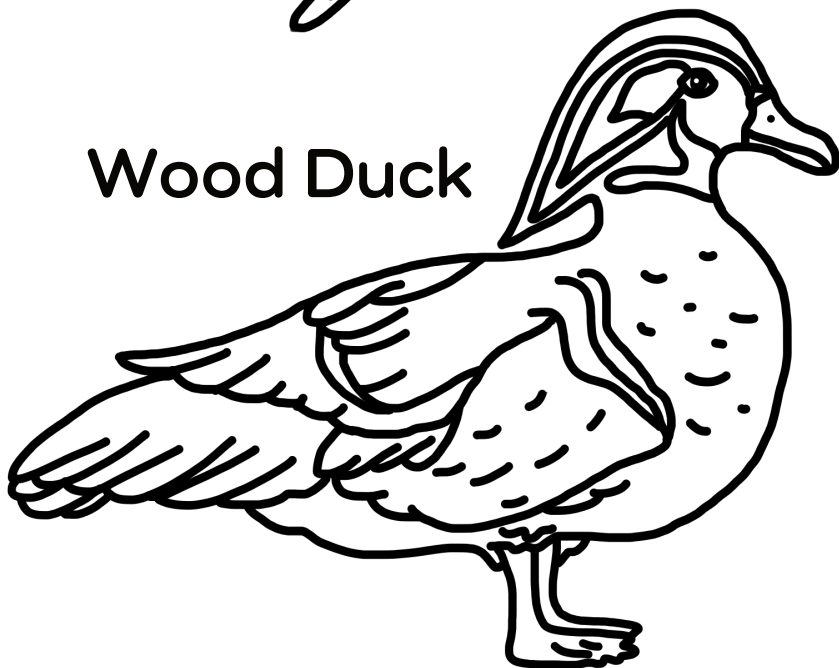
Prothonotary
Warbler



Belted
Kingfisher

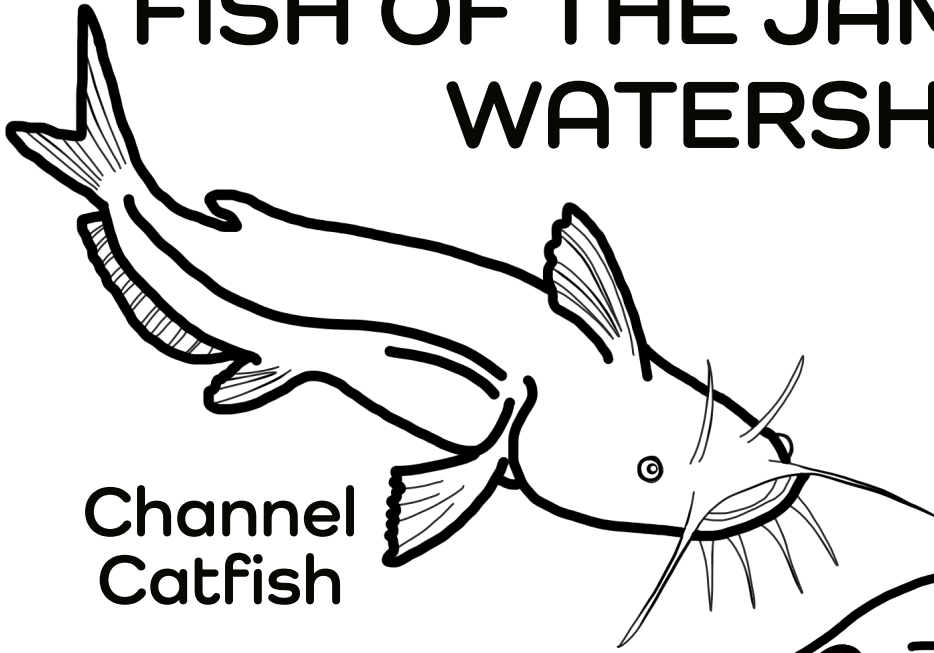


Great Blue
Heron



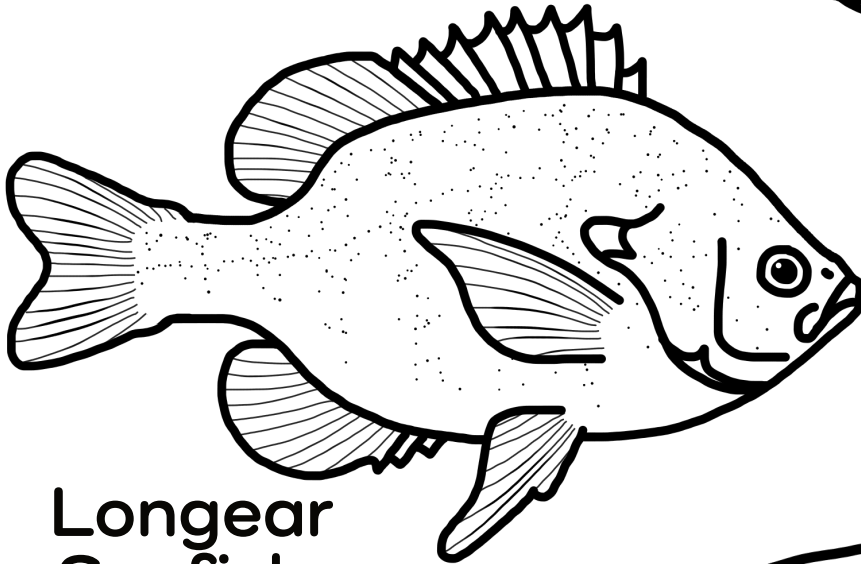
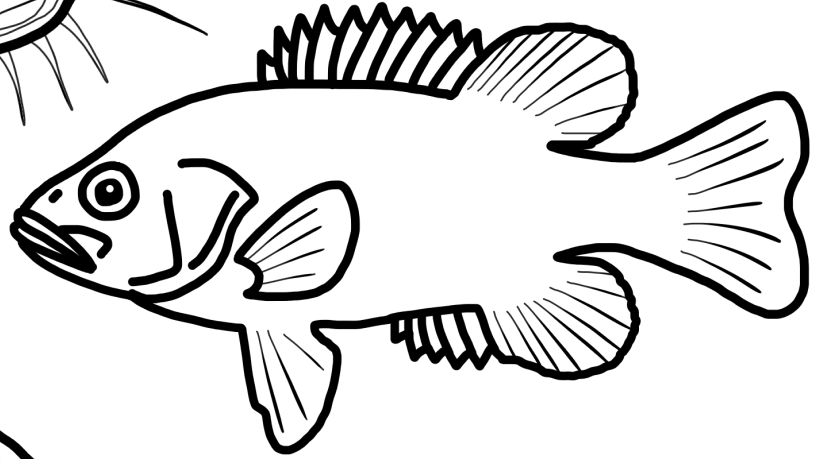
Wood Duck

FISH OF THE JAMES RIVER WATERSHED



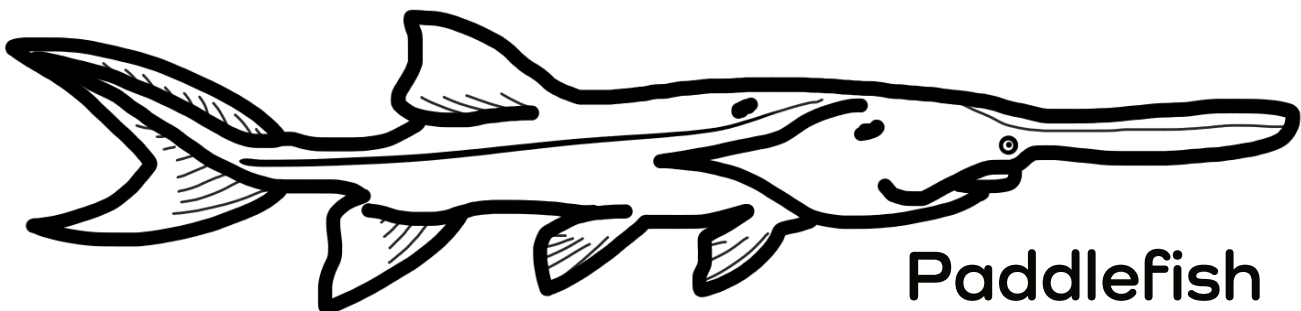
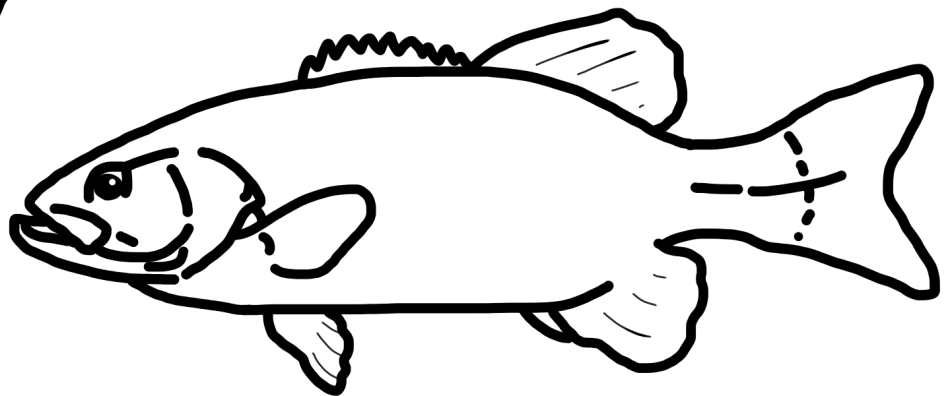
Channel
Catfish

Ozark Bass
"Goggle-Eye"



Longear
Sunfish

Smallmouth
Bass



Paddlefish



The James River Basin Partnership is a grassroots, not-for-profit, 501(c)(3) organization working to improve and protect the water quality of the springs, streams, rivers, and lakes in the James River watershed which consists of almost a million acres of land in portions of eight counties.

Learn more at
www.JamesRiverBasin.com



**CREATED BY
BEKAH DAVIS**



This material is based upon work supported by AmeriCorps under Grant No. 19VSWM0006.